

## Power Supply

PS-1208EU

For Powering all Liteway® Transmission Systems

The **Liteway®** PS-1208 is a stand-alone wall type plug-in power supply that may be used to power one to two fiber optic transmission units.



## Technical Specifications

DC Output Voltage	12 V +/- 5% at 800 mA load
DC Output Current	800 milliamperes
AC Input:	100/240 VAC 50/60 Hz
AC Input Connector	Wall Plug
Cord Length	6 feet
Indicator Lights	None
Operating Temperature	-35° to +75°C
Physical Size	3.07" (78.0) L x 1.91" (48.5) W x 1.33" (33.8) D

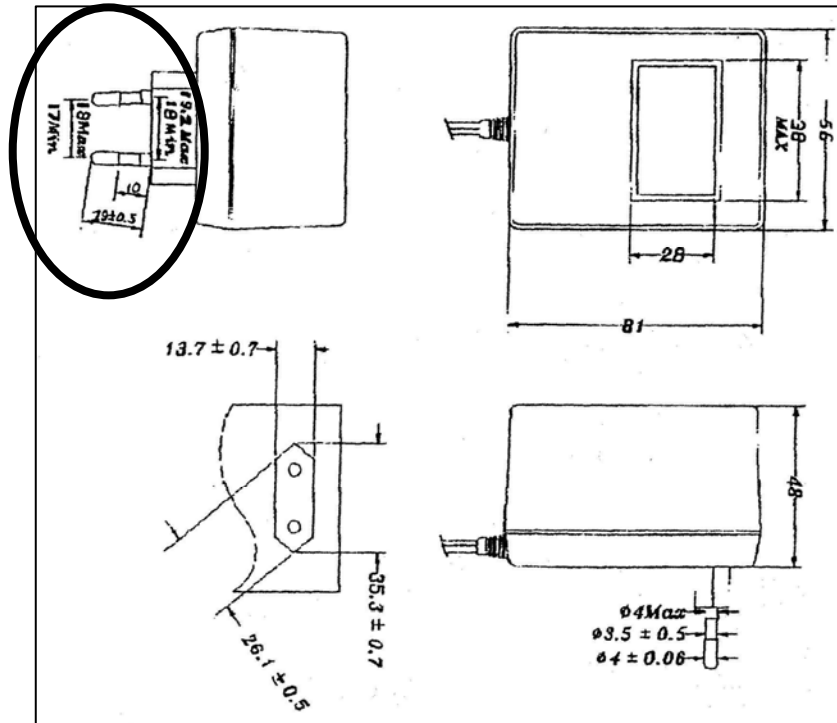
## Ordering Information

PS-1208XX

Where XX = Region code  
EU = European Union

Note: that all specifications are subject to change without prior notice.

Depends on the version used in specific regions. (EU version is shown)



**Liteway®**  
Fiber Optic Transmission Systems

www.Liteway.com  
USA 516-931-2800